

DESIGNERS GUIDE

Design Approach
Guide Standards
Shapes & Sizes
Layouts





Your Dream Design, Manufactured Custom!

WHAT MAKES US DIFFERENT

Soft Touch Furniture is the industry leader in manufacturing durable, high-quality commercial furniture for the restaurant, hospitality, and other industries.

Besides our commitment to superior craftsmanship, we're known as the manufacturer who gives customers unparalleled choice. Materials, fabrics, shapes, sizes, colors... it's all on the table. You have a vision, and we're here to help you realize it, whether it's your own designer leading the way or we're working directly with you to customize your look.

When you partner with us, you will receive expert knowledge, personal attention, and competitive pricing. We are proud of our outstanding craftsmanship and insistence on doing business the right way, which earned us the 2024 Better Business Bureau Torch Award for company ethics.

Our team of professionals and skilled artisans, ranging from office staff to designers and builders to our delivery and install team, ensure each piece is produced to your exact specifications. From a stand-alone piece to a complete furniture package, we are your one-stop source for high-quality custom furniture that is the best value in the industry.

Soft Touch Furniture
1560 South State Street
Girard, Ohio 44420 U.S.A.
1.877.747.7638

softtouchfurniture.com
info@softtouchfurniture.com



Since 1974, Soft Touch Furniture has produced some of the premier furnishings in the industry. Our comprehensive experience across all manner of clients - from fast-casual restaurant chains to world-class NYC hotels to stand-alone restaurants of every persuasion - gives our team a unique perspective in taking your vision from concept to completion. And we do it all: booths and banquettes, tabletops, chairs, barstools, or even bespoke custom pieces! Collaborating together, we'll ensure you get exactly what you want.

About Us

Design

We wrote this design guide to assist you in creating your dream space. We realize designing is not easy, so we'll touch on the important parts in the following pages. We're also here to help you any way we can: whether you simply need a second set of eyes, or want a little more input on choosing fabrics and finishes, we are a just a phone call or email away.

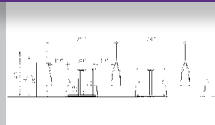


DESIGN SERVICES

- Project consultation
- Overview of your design concept
- Field measurements
- Seating plan with 2D CAD drawings
- Assistance with choosing style and fabrics
- Fabric and finish samples available
- 3D renderings
- Wall elevations
- Delivery of final product
- White Glove Installation

At Soft Touch Furniture, we pride ourselves on not only making beautiful, high-quality furniture but also ensuring you will get exactly what you want.

Space planning and seating capacities... pages 4 - 5



- Design approach
- Seating capacity

Standards... pages 6 - 9



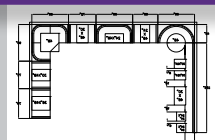
- Seating standards
- Bar standards
- ADA standards
- Booth and table seating standards

Size and Layout... pages 10 - 13



- Booth shapes
- Height differences
- Example layouts

Specifications... pages 14 - 15



- Fabric
- Foam and Cleaning

Design Approach

Every dining or reception area should have a natural ebb and flow. The story should be cohesive from the lobby to the bar to the dining room to the kitchen. For optimal results that allow your customers to enjoy the environment while ensuring your staff can operate efficiently, we recommend using the guidelines below to establish your ideal floor plan. A healthy combination of booths, tables of various sizes, and private spaces gives the best chance to maximize revenue while maintaining a pleasing ambiance.

A dining area should have a natural flow, from the lobby to the bar to the dining room to the kitchen. For optimal results that allow your customers to enjoy your environment and your staff to operate efficiently, use the below guidelines to establish the ideal floor plan for your dining experience. In many cases a healthy combination of booths, various size tables, and private spaces give the best chance to maximize revenue.

PLANNING STEPS

- Step 1: Grab a Tape Measure
Measure the interior space of your area. Take time to note the location and dimensions of features such as doorways, windows, emergency exits, counters, server stations, bar, and any other feature that takes up floor space or otherwise must be accounted for in the floor plan or CAD drawings.
- Step 2: Pencil and Graph Paper
Sketch a detailed, scaled outline of your floor plan and its features using the measurements.
- Step 3: Select Dining Seating
Select seating and table sizes that meet your needs and add those to the sketched floor plan.

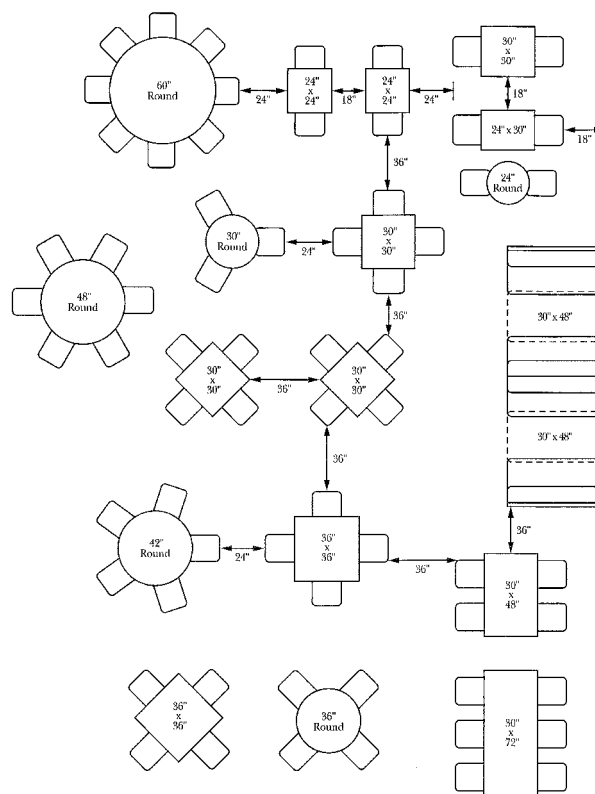
DINING AREA SPACE ALLOCATIONS

- Spacious Dining: 14 sq ft/person
- Cafeteria and Restaurant Dining: 12 sq ft/person
- Banquette, Institutional and Fast Food Dining: 10 sq ft/person

AISE ALLOWANCES

- Chair back to chair back: 18" – 24" aisle 6" minimum for access
- Table corner to table corner: 24" – 36" aisle 12" minimum for access
- Table side-by-side: 16" – 18" aisle 3" – 6" for no access
- Service aisle: 28" – 36" aisle

ACCEPTABLE TABLE SPACING



Seating Capacity

The architectural standard for dining areas recommends that 300 square inches be allowed per diner. However, some establishments may call for more or less space. For instance, fast-food restaurants, quick-serve coffee shops, diners, lunchrooms, or similar spaces can get by with less space per diner. On the other hand, restaurants such as fine dining restaurants, pizza shops, Mexican restaurants, and many Asian-style restaurants may require more table space for larger food items, special utensils, various condiments and sauces, and similar.

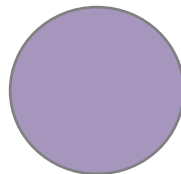
Tables come in different shapes and sizes, both of which have a big impact on seating capacity. Some examples of table shapes are:

- Square
- Round
- Rectangle
- Oval
- Half circle
- Drop Leaf
- Corner
- Boat
- Arc Rectangle
- Racetrack
- Custom



RECTANGLE

- | | | |
|-----------------|-----------------|--------------------|
| 18"x24" (2) | 30"x48" (4) | 42"x72" (6 – 8) |
| 24"x30" (2) | 30"x60" (4 – 6) | 42"x84" (6 – 8) |
| 24"x36" (2) | 30"x72" (6) | 42"x96" (8) |
| 24"x42" (4) | 30"x84" (6) | 48"x96" (8) |
| 24"x48" (4) | 30"x96" (8) | 48"x120" (10 – 12) |
| 24"x60" (4) | 36"x42" (4) | 48"x144" (12 – 14) |
| 24"x72" (6) | 36"x48" (6) | 48"x168" (14 – 16) |
| 24"x84" (6) | 36"x60" (6) | 60"x120" (12) |
| 24"x96" (8) | 36"x72" (6) | 60"x144" (14) |
| 30"x36" (2 – 4) | 36"x84" (6 – 8) | 60"x168" (16) |
| 30"x42" (4) | 36"x96" (8) | |



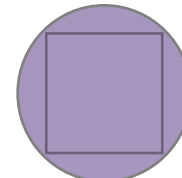
ROUND

- 18" Round (2)
- 24" Round (2)
- 30" Round (2 – 4)
- 36" Round (4)
- 42" Round (4)
- 48" Round (6)
- 54" Round (7)
- 60" Round (8)



SQUARE

- 18"x18" (2)
- 24"x24" (2)
- 30"x30" (2 – 4)
- 36"x36" (4)
- 42"x42" (4)
- 48"x48" (6)



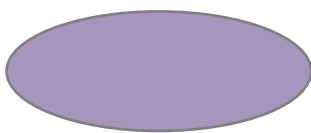
DROP LEAF

- 42" Round to 30"x30" (2–4)
- 48" Round to 34"x34" (4–6)
- 51" Round to 36"x36" (4–6)
- 60" Round to 42"x42" (4–8)



HALF CIRCLE

- 24"x48" (2)
- 30"x60" (2)
- 36"x72" (2 – 4)



OVAL

- | | | |
|-------------|-----------------|-----------------|
| 24"x36" (2) | 24"x96" (8) | 30"x96" (8) |
| 24"x36" (2) | 30"x36" (2 – 4) | 36"x72" (6 – 8) |
| 24"x42" (4) | 30"x42" (4) | 42"x54" (4 – 8) |
| 24"x48" (4) | 30"x48" (4) | 42"x78" (6 – 8) |
| 24"x60" (4) | 30"x60" (4 – 5) | 42"x84" (6 – 8) |
| 24"x72" (6) | 30"x72" (6) | 48"x78" (6 – 8) |
| 24"x84" (6) | 30"x84" (6) | 48"x96" (8) |



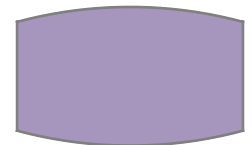
ARC RECTANGLE

- | | |
|-----------------|--------------------|
| 30"x60" (6) | 42"x84" (6 – 8) |
| 30"x72" (6 – 8) | 42"x96" (8) |
| 30"x84" (6 – 8) | 48"x96" (8) |
| 30"x96" (8) | 48"x120" (10 – 12) |
| 36"x60" (6) | 48"x144" (12 – 14) |
| 36"x72" (6 – 8) | 48"x168" (14 – 18) |
| 36"x84" (6 – 8) | 60"x120" (12) |
| 36"x96" (8) | 60"x144" (14) |
| 42"x72" (6 – 8) | 60"x168" (16) |



RACETRACK

- | | |
|-----------------|--------------------|
| 30"x60" (6) | 42"x84" (6 – 8) |
| 30"x72" (6 – 8) | 42"x96" (8) |
| 30"x84" (6 – 8) | 48"x96" (8) |
| 30"x96" (8) | 48"x120" (10 – 12) |
| 36"x60" (6) | 48"x144" (12 – 14) |
| 36"x72" (6 – 8) | 48"x168" (14 – 18) |
| 36"x84" (6 – 8) | 60"x120" (12) |
| 36"x96" (8) | 60"x144" (14) |
| 42"x72" (6 – 8) | 60"x168" (16) |



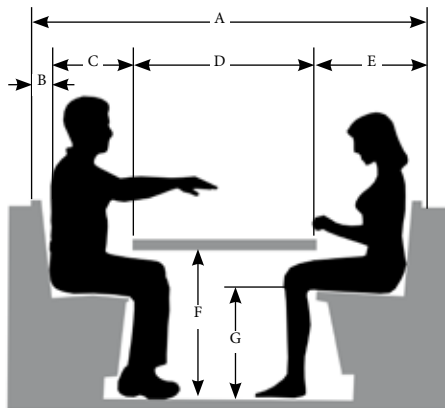
BOAT

- 36"x72" Center 42 (6 – 8)
- 36"x84" Center 48 (6 – 8)
- 36"x96" Center 48 (6 – 8)
- 36"x120" Center 48 (6 – 8)
- 36"x144" Center 48 (6 – 8)
- 36"x168" Center 48 (6 – 8)

(#) Denotes seating capacity

Seating

Providing comfortable, spacious seating for your diners to relax is very important to the success of your establishment. Use the following guidelines/ seating layout standards for booths and tables to create a pleasant seating environment for your guests. At Soft Touch Furniture, our furniture always meets these guidelines, which helps ensure your guests feel relaxed and enjoy your establishment. We recommend all new establishments check with your local codes to see if there are any mandatory spacing requirements or ADA requirements.

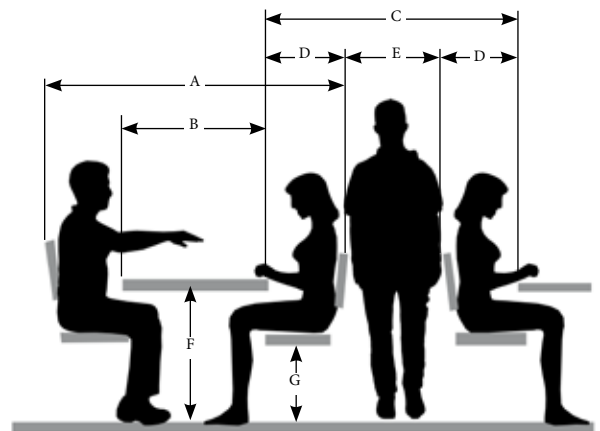


BOOTH DIMENSIONS

- | | |
|---------------------------------------|---------------|
| A. Total booth width | 66" – 84" |
| B. Seat back depth | 3" – 6" |
| C. Seat back-to-table edge clearance | 16" |
| D. Table width | 24" – 42" |
| E. Table edge to back of seat cushion | 22" – 24" |
| F. Tabletop height | 29" – 30" |
| G. Seat height | 18" – 19 1/2" |

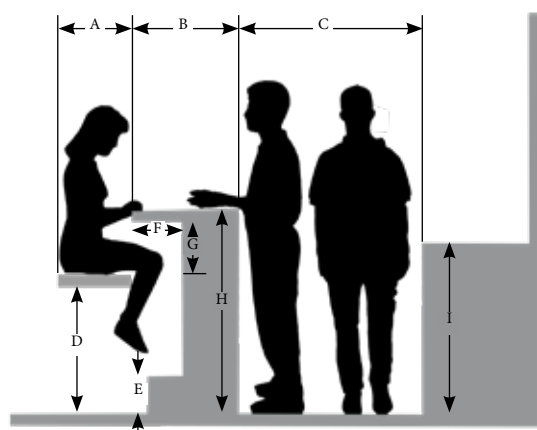
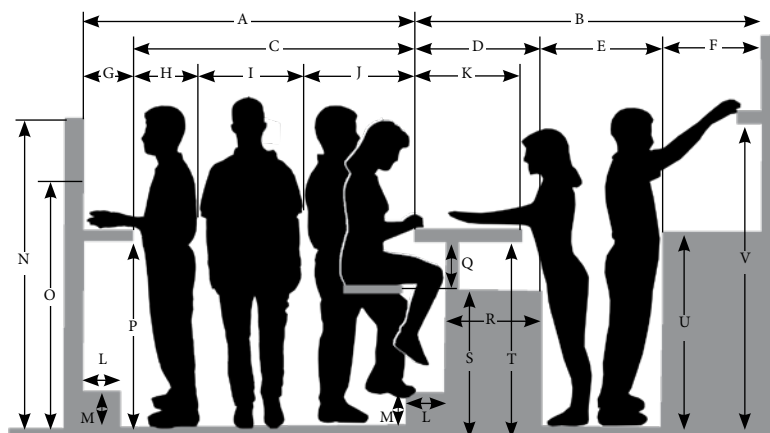
TABLE DIMENSIONS

- | | |
|--------------------------------------|-----------|
| A. Total area required for table | 60" – 90" |
| B. Tabletop width | 24" – 42" |
| C. Customer traffic and seating area | 54" – 72" |
| D. Customer seating area | 18" – 24" |
| E. Traffic area | 36" |
| F. Tabletop height | 29" – 30" |
| G. Seat height | 16" – 18" |



Bar

If your restaurant is to have a bar or a counter space that diners will eat or drink at, keep in mind these areas are just as important as your tables or booths. Below are the industry standards for bar and counter designs that allow for a well-proportioned space. Remember that not only will your guests need to feel comfortable visiting your establishment, but your staff will also need to be comfortable working in the space as well. In addition, make sure that your staff has adequate workspace, as this will be important to operations and the atmosphere.



BAR DIMENSIONS

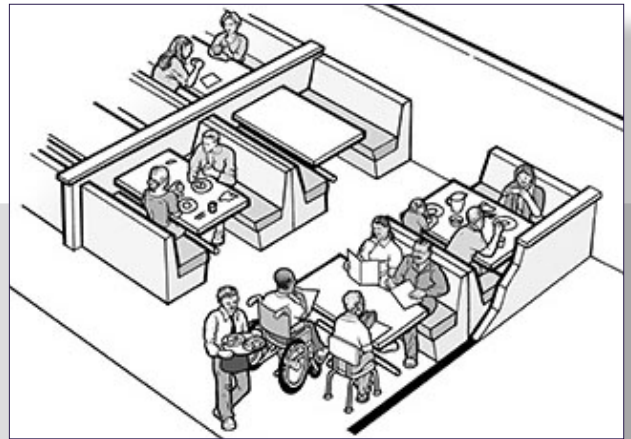
A. Outer bar edge to wall	76" – 84"
B. Outer bar edge to back wall	84" – 104"
C. Outer bar edge to drinking shelf	66" – 72"
D. Outer bar edge to equipment edge	23" – 28"
E. Behind bar traffic area	30" – 36"
F. Back bar depth	24" – 30"
G. Drinking shelf depth	10" – 12"
H. Drinking shelf customer area	18"
I. Customer traffic area	30"
J. Bar seating area	18" – 24"
K. Bar depth	18" – 24"
L. Footstep depth	6" – 9"
M. Footstep height	7" – 9"
N. Room divider screen (high)	76"
O. Room divider screen (low)	55"
P. Drinking shelf height	42" – 45"
Q. Top of barstool to bottom of bar	11" – 12"
R. Depth of behind – bar equipment	22" – 26"
S. Behind – bar equipment height	30"
T. Bar height	42" – 45"
U. Back bar height	36" – 42"
V. Back wall shelf height	60" – 69"

COUNTER DIMENSIONS

A. Customer seating area	12" – 18"
B. Counter depth	18" – 24"
C. Service traffic area	36"
D. Seat height	30" – 31"
E. Footstep height	12"
F. Depth of counter underside	10"
G. Top of seat to underside of counter	11" – 12"
H. Counter height	42"
I. Back service counter height	36"

ADA

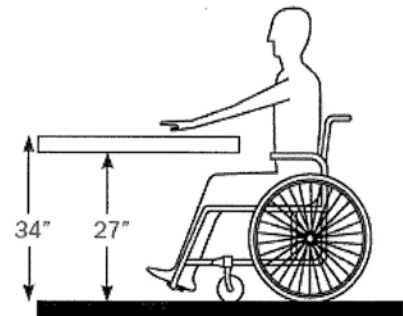
ADA requirements have become commonplace, so definitely keep them in mind when designing your space. Your location may incorporate ramps, handicap-accessible bathrooms, parking spaces, and more; however, it can be quite complex to design spaces accessible to people with disabilities. Below are the industry standards for space allocation regarding ADA regulations.



ADA RECOMMENDED CLEARANCES

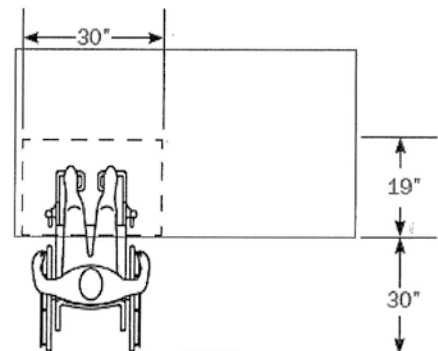
To comply with ADA regulations for wheelchair access to tables please use these recommended specifications:

- Minimum clearance of 27" from the floor to the bottom of the table
- Minimum barrier free width of 30"
- Minimum barrier free depth of 19"
- Minimum unobstructed space from table edge of 30"
- Overall table height not to exceed 34"



ADDITIONAL ADA RESOURCES

- National Network of ADA Centers: www.adata.org
- U.S. Justice Department's ADA Site: www.ada.gov
- ADA and ABA Guidelines: www.access-board.gov/ada

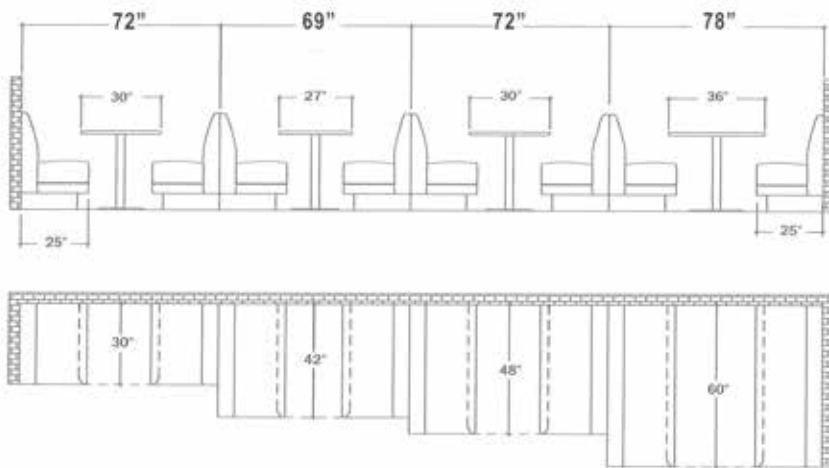


Spacing

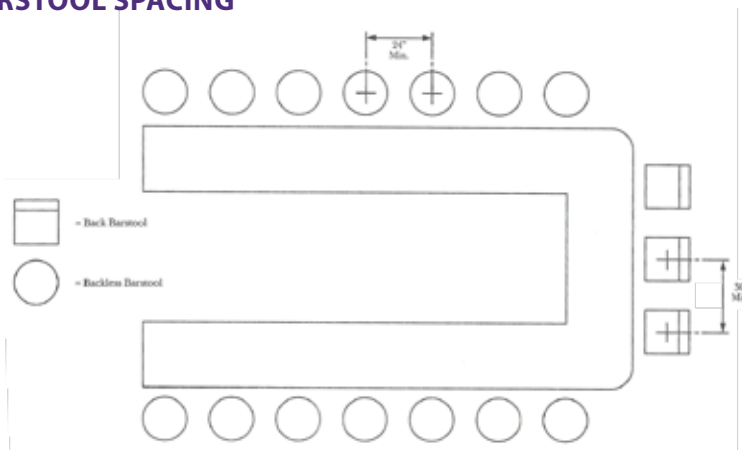


The spacing between booths and barstools can ultimately influence your customers' dining experience. Too much space makes your customers feel disjointed, whereas too little space may make your customers feel claustrophobic. Use the booth and barstool spacing guidelines below to make your customers comfortable. Another thing to remember when considering your booths is the base size and structure. You can use a standard base on booth tables, but a great option to give your customers extra legroom is utilizing the cantilever bases featured below.

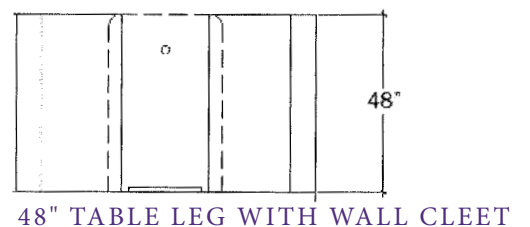
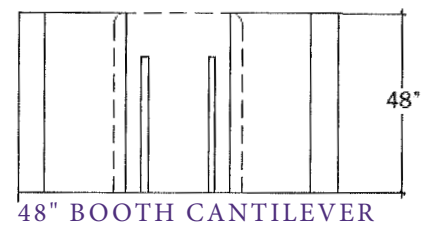
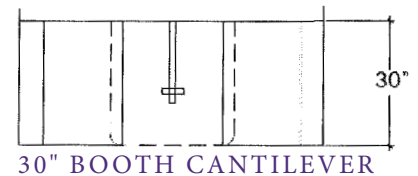
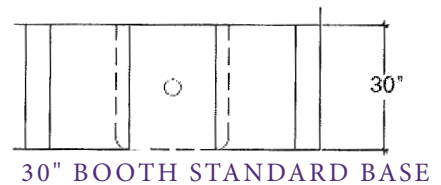
BOOTH SPACING AND LENGTHS



BARSTOOL SPACING



BOOTH BASE OPTIONS



Booth Shape

The shape of your furniture can greatly affect how your establishment looks, flows, and functions. There are endless booth shapes available to customize your design. Single and double booths are the most common booth shapes; however, mixing shapes can give your space a distinct look and feel. The booth shapes below can be mixed and matched, creating your desired dream space. Also remember that we are the premier custom furniture manufacturer and will create any size and shape if none of these work for your vision.

When deciding which booth shapes you want to use in your design, think about:

- Location of all windows and doors
- Tight corners or small spaces
- Angled or curved walls
- Columns
- Long lengths of wall
- Any accessibility issues



SINGLE



DOUBLE



U-SHAPE



3 QUARTER



STRAIGHT



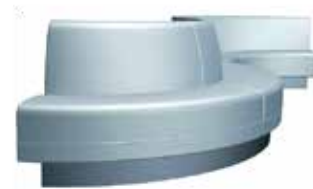
L-SHAPE



ROTUNDA



ELLIPSE



CUSTOM CURVE

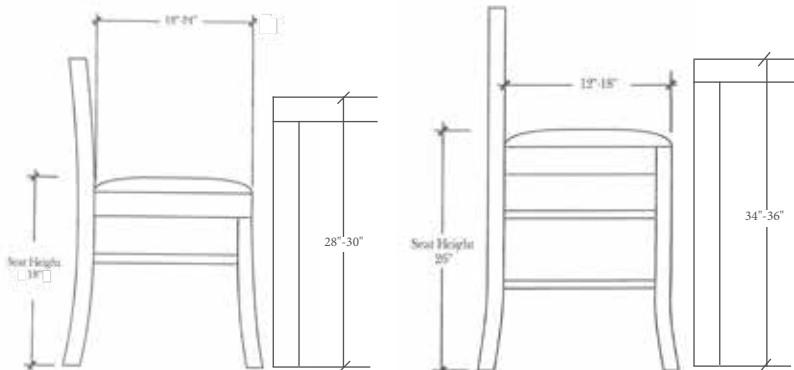
Height

Like all design choices, tables, chairs, and booths have several different height options. As the height of your furniture can significantly affect the feel of your establishment, there are factors to keep in mind when planning: What atmosphere do you want to have (casual vs. formal)? Are there any regulations that you need to be aware of? Are there any architectural features of your space that may help determine your furniture size (lower ceiling, etc.)? Once you answer these questions, choosing the size of your furniture should be easy.

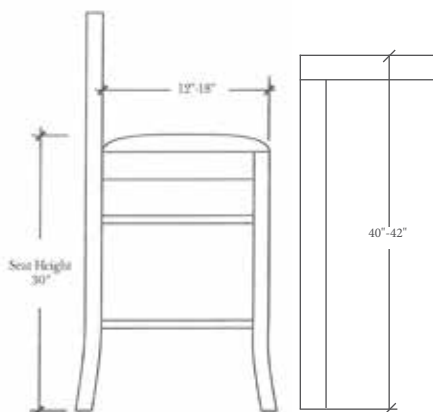


STANDARD HEIGHT

COUNTER HEIGHT



BAR HEIGHT



DIFFERENT HEIGHT CHOICES

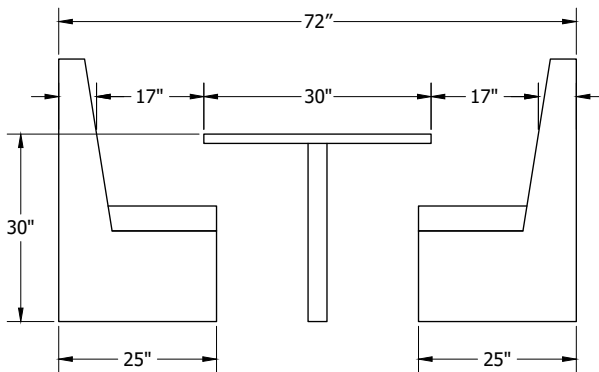
- Standard Height:**
 This is typically a table height of 28" – 30" and a seat height of 18". It is the most common height in restaurants. Not only do most people find this height very comfortable, but it is also the only height that complies with ADA regulations.
- Counter Height:**
 This is typically a table height of 34" – 36" and a seat height of 26". They are typically more casual and make it easier to talk with people who may be standing. They can work well in small areas because they give the illusion that they take up less space.
- Bar Height:**
 This is typically a table height of 40" – 42" and a seat height of 30". This taller, thinner height is very good for small spaces (and perfect for "bar area" tables). They have the same advantages as counter height furniture but even more so. Moreover, because the difference between standing and sitting is so minimal, they create a very casual, "fun" atmosphere.

Design in Practice

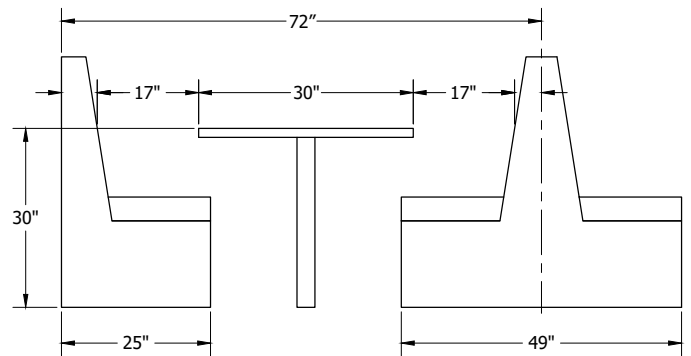
As a reference, below are some examples of available layout options. Of course, endless combinations exist, so feel free to use these ideas to get your creative juices flowing! We suggest that when you begin designing for your space, you ensure the design incorporates the number of seats you'd like and the atmosphere you wish to project while also providing your customers' comfort.



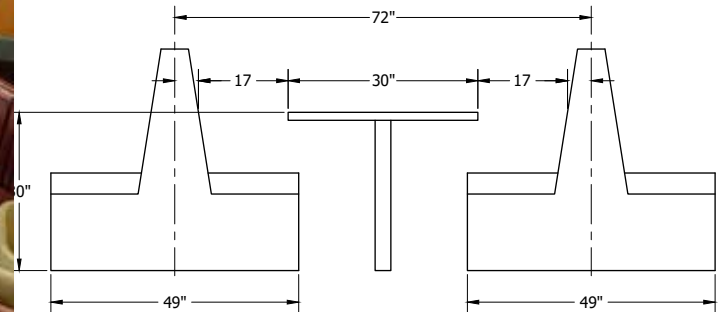
SINGLE TO SINGLE



SINGLE TO DOUBLE

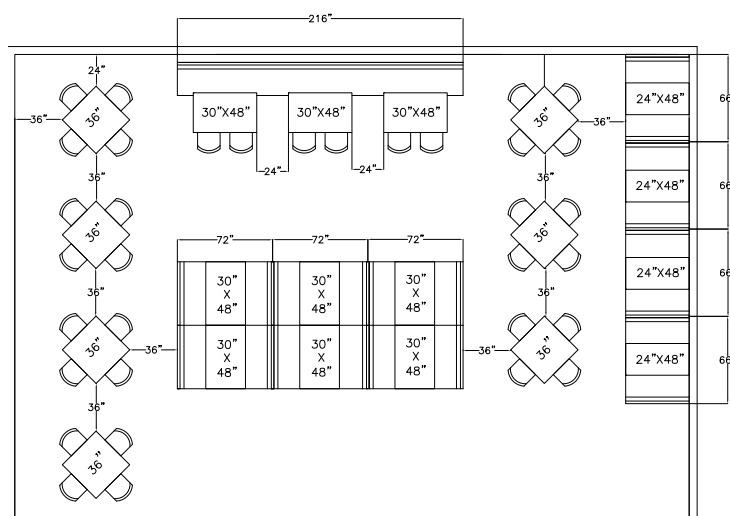
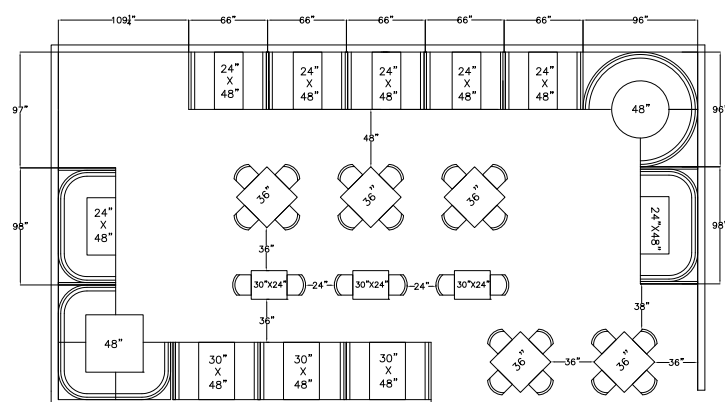


DOUBLE TO DOUBLE



Space

For many establishments, different areas can have their own personality and character, and we encourage you to consider that in your concept and planning. When laying out your space, make sure you're not only thinking about the overall floor plan, but also considering the height you want your diners to be sitting at - having seating areas that are at different heights can make your space much more dynamic and allow many different experiences within a single space.



THINGS TO CONSIDER WHEN DESIGNING YOUR SPACE

- Organize seating so your staff has a clear path between each table and the kitchen.
- For busy aisles with bidirectional traffic (both servers and customers,) consider a wider aisle.
- Leave clear paths to fire exits. In the event of an emergency, guests must be able to escape. If you're unsure whether your seating plan is safe, consult the local fire marshal
- Think about your desired customer base. Different groups of people feel more comfortable in various settings. Casual, formal, a mix of the two – what's your vision?
- Remember it's your space! There are endless options for designing it, so you can be as creative as you want.
- When in doubt, ask for help. At Soft Touch Furniture, we are always just a call away, and we are happy to help with the design of your space, ensuring your vision is realized from concept to completion.

Fabric

In designing for your space, the layout phase is only the beginning. Fabric choices greatly affect your establishment's look, feel, and overall vibe.

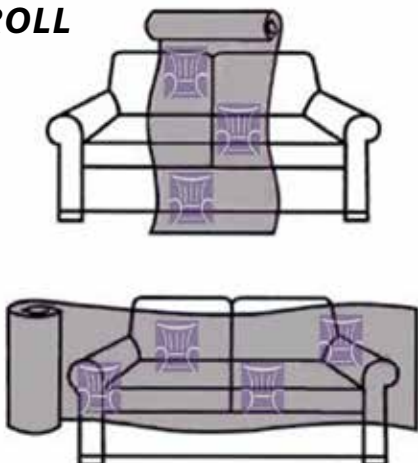
When selecting your materials, keep in mind it goes deeper than physical appearance/color - fabric can also have different durability characteristics and textures. Use the following guide to help you choose the ideal fabric for your furniture.



FABRIC DESIGN

- Soft Touch Furniture will normally railroad (top parallel to the selvage edge) all fabrics, including velvets, when cutting either our standard fabrics or the customer's own material (COM). If, in our opinion, a fabric is designed to be cut Topped Out (top perpendicular to the selvage edge or up the bolt) or will present a better overall appearance if applied in this manner, we will cut it up the roll.
- You may request that a fabric normally railroaded be applied up the roll.
- All fabrics typically have patterns that will repeat after a certain length. The term "repeat" refers to the length of the pattern before it starts over. Normally, the repeat in the fabric will be in increments of 3", with the largest repeat typically being 27". Repeats can be vertical, horizontal, or in both directions.

UP THE ROLL



RAILROADED

FABRIC DURABILITY

Fabric durability is typically measured by what's called a double-rub count. This testing method is done using a wyzenbeek abrasion tester that rubs a pad back and forth until the fabric is worn. Each back and forth pass is known as a "double-rub." Different grades of fabric require a different double-rub count.

- Heavy-duty commercial grade fabrics will withstand 100,000 double-rubs or more, and are durable enough for a high traffic commercial area.
- Heavy-duty grade fabrics will withstand 30,000 double-rubs. This fabric grade is generally stiffer and thicker than regular fabric and can be used in high traffic residential areas.
- Medium-duty grade fabrics will withstand between 15,000 and 30,000 double-rubs. This fabric grade is versatile and can be used for residential usage in moderate traffic areas.
- Light-duty grade fabrics will withstand between 9,000 and 15,000 double-rubs. This fabric grade generally only withstands one to three years of regular usage, and is not recommend for upholstery work.
- Delicate-duty grade fabrics will withstand under 9,000 double-rubs. This fabric grade should only be used for decorative applications.

Foam & Cleaning

How long your furniture lasts will depend greatly on what you put in and on it. In a booth or seat cushion, the density of foam you choose can affect the piece's longevity. Likewise, how well you care for your furniture can affect how well it holds up.



FOAM:

Foam can be measured by both density and firmness (these are separate characteristics – i.e. you can have a very dense foam that is also very soft, or you could have a very firm foam that is not very dense.) Due to these factors, it is possible to pick foams that will cater to any need imaginable. Below are the characteristics of these three values in more detail.

DENSITY:

- Density measures foams longevity and quality.
- It is dictated by the size and thickness of the individual cells that make up the foam.
- Foams density is measured by how much one cubic foot of the material weighs. For example one cubic foot block of 3 lb. foam will weigh 3 lbs.
- The denser the foam, the higher the quality and the longer the foam will last.

FIRMNESS:

- Firmness measures the physical feel of foam and how it resists pressure.
- It is measured by seeing how much pressure, in pounds, it takes to compress a 15” by 15” by 4” sample of foam one inch with a 50 square inch circular indenter.
- The value of that amount is called an ILD.
- Firmer foam has a higher ILD while softer foam has a lower ILD.
- Most ILD values range from 8 to 70 but can go as high as 150.

CLEANING INFORMATION

DC	<ul style="list-style-type: none"> ■ Dry clean ONLY
S	<ul style="list-style-type: none"> ■ Spot clean only with a water-free cleaning solvent ■ Do not saturate or use water ■ When cleaning a spill, blot immediately to remove spilled material
W-S	<ul style="list-style-type: none"> ■ Spot Clean with upholstery shampoo, foam from a mild detergent, or a mild dry cleaning solvent ■ Do not saturate
W	<ul style="list-style-type: none"> ■ Spot clean only with a water based shampoo or foam upholstery cleaner ■ Do not oversaturate or use solvents to spot clean ■ Blot immediately to remove any spilled material
X	<ul style="list-style-type: none"> ■ Clean only by vacuuming or light brushing with a non-metallic stiff bristle brush ■ Do not use water or solvent based cleaner
Leather	<ul style="list-style-type: none"> ■ The most easy to care for material ■ Use normal dusting and occasional mild soap and damp cloth ■ Never wax, polish, or oil
Vinyls	<ul style="list-style-type: none"> ■ Make sure you protect vinyls from hair and body oils ■ Wash with warm water and mild soap
Crypton	<ul style="list-style-type: none"> ■ Crypton has special cleaning instructions ■ View www.cryptoncare.com for instructions
Flock Fabrics	<ul style="list-style-type: none"> ■ Spot clean only with a water based shampoo or foam upholstery cleaner ■ Do not over wet or use solvents to spot clean ■ Use cautious agitation or rubbing while fabric is damp as flock fabrics are sensitive to pile distortion and texture change with too much agitation ■ Use extreme caution if using a professional cleaning service ■ Allow to dry at least 24 hours before use after cleaning

*For more of our work,
see our other catalogs.*



Booths, Banquettes,
and Benches



Chair & Barstool



Tabletops and Bases



Waste Receptacles & Custom Millwork

SOFT TOUCH FURNITURE

When you call Soft Touch Furniture, you will always talk to a live person – in our Girard, Ohio facility – that is focused on your needs. Whether you own one establishment, are the buyer for a chain, or you are envisioning the next hot spot; you can expect nothing less than our full attention and our very best work at every step of the process. And we will do it all at a value-laden cost you will love. Yes, you can have it all: High-quality commercial furniture manufactured your way, the colors/fabrics/look you want, professional installation, and a company that conducts business in an ethical and customer-centric manner.

Experience the Soft Touch Furniture difference - contact us today!

Soft Touch Furniture
1560 South State Street
Girard, OH 44420 USA

www.softtouchfurniture.com
Phone: 877.747.7638 | 330.545.4204
Fax: 330.288.0083
Email: info@softtouchfurniture.com



For additional information please contact
us at 877.747.7638. We're HAPPY to help!