

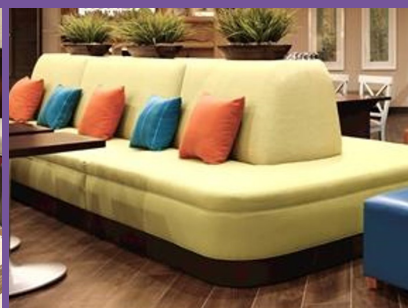
Booth & Banquette Collection



Booth Styles



Custom Design



Options



Interiors



WHAT MAKES US DIFFERENT

For the past 45 years, Ohio based Soft Touch Furniture has been a leader in the commercial furniture industry—a leader in durable, high quality commercial furniture with a strong reputation for affordable, quality, custom products, and excellent customer service.

We know that your project demands special attention. When you partner with Soft Touch Furniture, you receive expert knowledge, personal attention, and competitive pricing—a combination that sets us apart in the commercial furniture manufacturing industry. We are proud of our superior attention to detail and outstanding craftsmanship.

Our state of the art production facility, skilled craftsmen, and superior customer service allow our customers to enjoy creative design, world class quality, and direct from the manufacturer pricing.

Our team of dedicated craftsmen ensures each piece is produced to your exact specifications. From a single piece to a complete furniture package, we are your one-stop source for premium custom furniture.



WE ARE THE MANUFACTURER



Table of Contents

Booth Styles	4–29
Booth Shapes	30
Booth Heights	30
Finishing Touch	31
Other Details	31





Embassy Suites
Tuscaloosa, AL

Let Soft Touch Furniture help you create your vision for your space

At Soft Touch Furniture, we pride ourselves in making beautiful high-quality booths and banquettes. They have been thoughtfully engineered to be attractive, functional, and low maintenance.

There are a cornucopia of options, from heights, to styles, to finishes, so you can be assured of getting the exact look you desire, at the price point you want. We offer booths in every size and shape imaginable and on the off-chance we don't have what you are envisioning, we'll make it. It's that simple.



SOFT TOUCH
FURNITURE



Newark Airport
Newark, NJ



The Crunkleton
Charlotte, NC



Joe Booth
Biscuit Tuft



Hex Booth
Diamond Tuft

Our booth manufacturing capabilities are as limitless as your creative imagination. Anything you can think of we can design, whether it be a classic design like the Adams booth or something elegant, like our diamond tuft hex booth, we are up to the challenge.

Our catalog of booths is just a sampling of what we are capable of. If you don't see something you like, give us a call and we will work with you to get the design of your dreams.

Cafe 422
Boardman, OH

Booth Styles



Quality

Our booths are unique in every way but that doesn't stop us from having exceptional quality and craftsmanship. Each of our booths are checked and re-checked by quality assurance to make sure that they are top notch quality.

Also, our booths are CNC engineered for accuracy and are assembled by skilled craftsmen for the best possible quality.



ANDERSON

- Smooth back
- Wood top and side caps
- Enclosed kick base



ADAMS

- Smooth back
- Fully upholstered
- Enclosed kick base



BERLIN

- Welt back
- Wood top and side caps
- Enclosed kick base



BAILEY

- Fully upholstered
- Head roll
- Enclosed kick base



UNIVERSITY

- V-back
- Fully upholster with coordinating welt
- Enclosed kick base



MINNESOTA

- Smooth back
- Wood crumb wipe, top and side caps
- Enclosed kick base

Booth Styles



CRANE

- Smooth back
- Wood top and side caps
- Upholstered crumb wipe and seat support
- Enclosed kick base



DUKE

- Smooth back
- Wood top and side caps
- Open base with contemporary legs



WILLY

- Smooth back
- Fully upholstered
- Open base with tapered legs



CAMPBELL

- Vertical channel back
- Fully upholstered
- Upholstered crumb wipe and seat support
- Enclosed kick base



HARVEST

- Smooth back
- Decorative wood side cap
- Wood top cap and seat support
- Enclosed kick base



HEX

- Button diamond tufted back
- Fully upholstered
- Enclosed kick base



ROOSEVELT

- Smooth back
- Fully upholstered
- Fabric rolled over top and sides
- One piece wood seat support and kick base



ELEANOR

- Fabric rolled over top
- Wood side caps
- One piece wood seat support and kick base



SILVER

- Upholstered back with accent stripes and piping
- Head roll
- Wood top and side caps
- Enclosed kick base



SILVER

- Upholstered back with accent stripes and piping
- Wood top and side caps
- Enclosed kick base
- Shown double booth with glass divider



KENNEDY

- Back upholstered plain with decorative nails around edge
- Wood top and side caps
- Drop front seat
- Enclosed kick base



EAGLE

- Smooth back
- Laminate top and side caps
- Drop front seat
- Enclosed kick base



KENT

- Smooth back
- Wood top and side caps
- Drop front seat
- Enclosed kick base



STEVENS

- Upholstered back with accent stripes and piping
- Upholstered top and side caps
- Enclosed kick base



BOARDMAN

- Fully upholstered
- Fabric pulled over top and sides
- Drop front seat
- Low profile kick base



APOLLO

- Blind biscuit tufted back
- Drop front seat
- Enclosed kick base



BEVERLY

- Removeable back seat cushions
- Back cushions are detailed with welted seams
- Tapered wood legs



LATIN

- Button tufted back
- Head roll
- Fabric rolled over top and sides
- Wood enclosed kick base

Booth Styles



CLEARWATER

- Smooth back
- Fully upholstered
- Drop front seat
- Enclosed kick base



ROSA

- Horizontal channel back and seat
- Fully upholstered
- Roll over top with side caps
- One piece wood seat support and kick base



SEATTLE

- Arched fan channel back
- Fully upholstered
- Upholstered crumb wipe
- Enclosed kick base



SEASONS

- Single square button back
- Square metal legs



ROCHESTER

- Smooth back
- Wood seat support, top and side caps
- Square metal legs



ROCHESTER - BAR HEIGHT

- Smooth back
- Bar seat height (30")
- Wood seat support, top and side caps
- Metal Foot Rest
- Square metal legs



GEORGIA

- Smooth back
- Wood crumb wipe, top and side caps
- Drop front seat
- Enclosed kickbase



DAKOTA

- Smooth back
- Wood crumb wipe, seat support, top and side caps
- Square metal legs



PRESTON

- Smooth back
- Wood seat support, top and side caps
- Enclosed kick base



CHARLESTON

- Channel back
- Wood crumb wipe, top and side caps
- Enclosed kick base



JAY

- Solid wood and wood veneer construction
- Hanging back cushions
- Enclosed kick base



PRESTON

- Inside back with buttons
- Wood seat support, top and side caps
- Enclosed kick base



ELDORADO

- Button tufted back
- Fully upholstered
- Wood frame



BIGHAM WITH HANGING BACK

- Button diamond tufted back pad
- Upholstered seat
- Wood back and seat support
- Enclosed kick base



BIGHAM

- Upholstered seat
- Wood back and seat support
- Enclosed kick base



SALEM

- Upholstered back and seat pad
- Solid wood frame with V-groove bead board back
- Enclosed kick base



WILMINGTON

- Upholstered back and seat pad
- Solid wood and wood veneer construction
- Enclosed kick base



MAINE

- Upholstered seat
- Wood back and seat support
- Enclosed kick base



Comfort Suites
North Bergen, NJ



Experience

Over the last 45 years, Soft Touch Furniture has produced some of the finest furnishings in the industry.

Our comprehensive experience across all manner of clients—from world-class hotels in New York City, to premier eateries in Los Angeles, to local family restaurants—gives us a unique insight into how best to take your vision from concept to completion.

Working together, we'll ensure you get exactly what you want.



Booth Styles



MOBY - BAR HEIGHT

- 30" seat height
- Upholstered seat pad
- Metal foot rail
- Enclosed kick base



MOBY - BAR HEIGHT

- 30" seat height
- Upholstered seat pad
- Riser foot rest with metal plate



MOBY

- Solid wood back and seat
- Hickory planks
- Enclosed kick base



OREGON

- Solid wood back
- Wood runs vertical
- Removable upholstered seat
- Enclosed kick base



DOC

- Outdoor banquette
- Solid wood construction



NOODLES

- Solid wood back and seat support
- Removable upholstered seat
- Open base with wood legs



BOARDWALK

- Pine wood slat back
- Removable upholstered seat



LENNY

- Upholstered back pad
- Laminate seat and sides with solid wood edging
- Enclosed kick base



ROME

- Upholstered back and seat pad
- Solid wood and wood veneer construction
- Enclosed kick base
- Shown with power / USB charger



MONTANA

- Solid wood and wood veneer construction
- Open base



MIDWOOD

- Upholstered back and seat pad
- Solid wood and wood veneer construction
- Open base with wood legs



RENO

- Solid wood and wood veneer construction
- Upholstered seat
- Open base with wood legs

Booth Styles



FAIRFIELD

- Button tufted back
- Fully upholstered
- Wood legs



IRVINE

- Smooth back
- Fully upholstered
- Wood frame
- Accent railing



HOOVER

- Wing style high back
- Fully upholstered
- Steel legs



DUCHESS

- Smooth back
- Wood crump wipe, top and side caps
- Open base with contemporary style legs



FRAMINGHAM

- Smooth back
- Wood arch, top and side caps
- Tulip style wood legs



TOPEKA

- Fully upholstered
- Sofa style
- Contemporary style legs



HOUSTON

- Inside back—individual upholstered panels
- Wood seat support
- Enclosed kick base



PRESTON

- Smooth back
- Wood seat support, top and side caps
- Enclosed kick base



CARSON

- Fully upholstered
- Sofa style
- Tapered wood legs



PACIFIC

- Inside back: removable loose knife edge pillows with leather strap attachment
- One piece wood kick base



PARSONS

- Curved back with button in center
- Round wood legs



HOMEWOOD

- Sectional sofa with throw pillows
- Open base
- Wood legs



ATLANTA

- Smooth back
- Fully upholstered
- Wood seat support
- Tapered wood legs



ONTARIO

- 30" Seat height
- Fully upholstered
- Metal seat support and legs
- Aluminum foot rest



FAIRMOUNT

- Button diamond tufted back
- Wood top and side caps
- Open base with steel legs



TORONTO

- 30" Seat height
- Wood side caps and legs
- Aluminum foot rest



LONDON

- Button diamond tufted back
- Marshall spring seat
- Decorative nails
- Bun feet



HOBOKEN

- Wing style back
- Upholstery rolled over top
- Tapered wood legs



Succotash
National Harbor, MD

Stonebridge Grill and Tavern
Howland, OH

Booth Styles



CLEVELAND

- 30" Seat height
- Maple wood top and side caps
- Riser foot rest
- Open base with contemporary legs



TEXAS

- 30" Seat height with pillows
- Riser foot rest with metal plate
- Open base with tapered legs



SARGENT

- Solid wood side cap and seat support
- Open base



VINCENT

- Sofa style chair
- Fully upholstered
- Wood legs



JERSEY

- Sofa style chair
- Fully upholstered
- Shown with upholstered arms



FORD

- Fully upholstered arm chair



The Melting Pot
Maple Shade, NJ



Bad Daddy's Burgers and Fries
Winston Salem, NC



JAKE

- Upholstered back and seat
- 2" steel frame powdercoated black



BELMONT

- Center accent panel on back
- Curved banquette
- Metal frame and legs



NEWARK

- Laminate with upholstered back
- Brushed stainless steel kick base, top and side caps



NAPLES - COUCH

- Sofa style
- Fully upholstered
- Coil sprung seat
- Tapered metal legs



NAPLES - CHAIR

- Sofa style chair
- Fully upholstered
- Coil sprung seat
- Tapered metal legs



FRANKLIN

- Lobby round banquette
- Button diamond tufted back
- Decorative nail heads along the seat support
- Roman foot wood legs



Virgin Atlantic Clubhouse
JFK Airport, NY

Booth Styles



WINCHESTER

- Button diamond tufted back
- Marshall spring seat
- Decorative nails
- Bun feet



CHAMBERS

- Sofa style
- Fully upholstered
- Tapered wood legs



MILLENNIUM

- Sofa style
- Button diamond tufted back
- Wood legs



CHICAGO - BAR HEIGHT

- 30" Seat height
- Single button diamond tufted back
- 2" Round foot rest: powder coated black
- Wood legs with recessed kick base



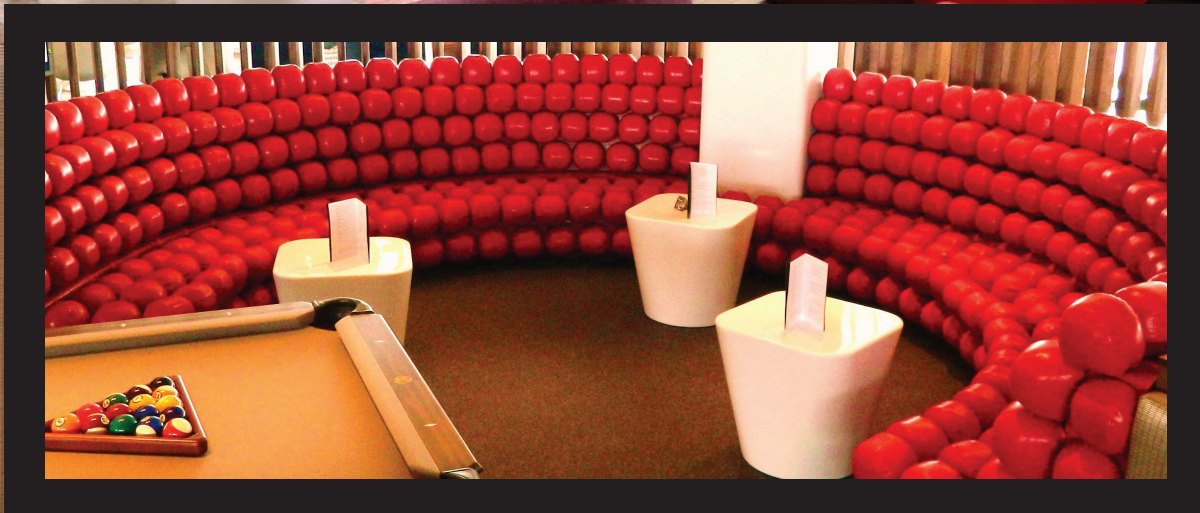
CHICAGO

- Single button diamond tufted back
- Half circle unit
- Wood legs with recessed kick base



STUDIO

- Button biscuit tufted inside back
- Fully upholstered outside back
- Wood seat support
- Enclosed kick base



SAMUEL

- Button diamond tufted back
- Fully upholstered
- Wood seat support
- Open base with wood legs



JOE

- Button biscuit tufted back
- Fully upholstered
- Wood seat support
- Open base with wood legs



JOE - BAR HEIGHT

- 30" Seat height
- Button biscuit tufted back
- Fully upholstered
- Open base, wood seat support and legs



EMERALD

- Double horizontal channel back
- Fully upholstered
- Drop front seat
- Lower lumbar support



EMBASSY

- Double horizontal channel back
- Lower lumbar support
- Enclosed kick base



DUBLIN

- Fully upholstered
- Wood seat support with tapered legs

Booth Styles



ARIZONA

- Three quarter corner unit
- Fully upholstered including outside back



CRANE

- Three quarter corner unit
- Fully upholstered
- Wood outside back



ARIZONA

- Half corner unit
- Fully upholstered



BIGHAM

- Half corner unit with attachable single units
- Upholstered back and seat
- Wood back and seat support



GODFREY

- U-shape banquette
- Fully upholstered



SILVER

- Upholstered inside back
- Wood outside back, top and side caps
- Enclosed kick base



VIRGIN ATLANTIC

- Ball sofa
- Custom circular booth
- Individual upholstered foam balls



O'HARE

- Quartz tops on swivels
- Chrome arm rests
- Electrical outlets
- Open base with chrome legs



OXFORD

- Sofa style
- Fully upholstered with pillows



ALABAMA

- Rectangular sofa
- Fully upholstered
- Open base—Tapered wood legs



HOLIDAY

- Upholstered seating
- Laminated side tables with electrical outlets and data modules



HOLIDAY

- Fully upholstered
- Custom angle to fit space



Mango Tree
Washington, DC



The Godfrey Hotel
Chicago, IL



At Soft Touch Furniture, we are not limited by geography. From our Ohio manufacturing facility, we reach the corners of the Earth—from all across the USA to Europe and Saudi Arabia, we have no boundaries. Plus, we can deliver on our own company trucks, and can install as well.

So we're there from beginning to end—initial concept, design, build, delivery, and installation. Thus, you can count on Soft Touch's quality every step of the way.



Louis Joliet Mall
Louis Joliet, IL

Booth, Chair and, Ottoman Styles



WINSTON

- Fully upholstered
- Enclosed kick base



GARLAND

- Square ottoman
- Fully upholstered
- Stainless steel base



JOLIET

- Upholstered back and seat
- Wood seat support
- Brushed stainless steel kick base



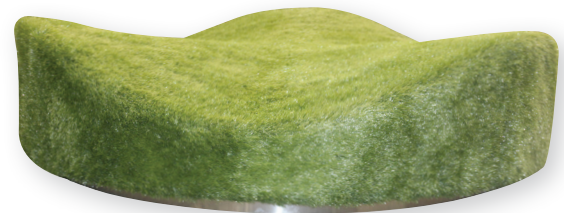
LOUIS

- Waiting bench
- Padded seat
- Power outlets
- Brushed stainless steel kick base



GARLAND

- Round ottoman
- Fully upholstered
- Stainless steel base



PLAYSCAPE LOUNGER

- Padded and covered with synthetic grass
- Brushed stainless steel kick base



The Covelli Center

Booth, Chair and, Ottoman Styles



PARKLAND

- Double sided kidney shaped banquette
- Fully upholstered
- Wood legs



IDAHO

- Corner booth
- Fully upholstered
- Tapered wood legs



JAMESTOWN

- Smooth inside back with buttons
- Kidney shaped seat
- Wood legs



SYLVESTER

- Side chair
- Fully upholstered
- Button biscuit tufted throughout
- Contemporary legs



MANHATTAN

- Side chair
- Tapered wood legs



SOHO

- Side chair
- Smooth back with center button
- Fully upholstered
- Tapered wood legs



VINELAND

- Square ottoman
- Fully upholstered
- Square wood legs



JEFFERSON

- Round ottoman
- Fully upholstered
- Tapered wood legs



ASHLAND

- Round ottoman
- Fully upholstered



VINELAND

- Square ottoman
- Fully upholstered
- Round bun style leg

Bench Styles



CENTURY

- Waiting bench
- Contoured foam seat
- Wood seat support



ROCKET

- Waiting bench
- Upholstered seat
- Wood seat support
- Enclosed kick base



EDGEWATER

- Waiting bench
- Contoured foam seat
- Wood seat support
- Enclosed kick base



WASHINGTON

- Waiting bench
- Padded removable seat
- Wood seat support
- Enclosed kick base



ASHLAND

- Waiting bench
- Fully upholstered
- Metal legs



LINCOLN

- Waiting bench
- V-style upholstery
- Metal legs with satin chrome finish



WINFIELD

- Waiting bench
- Button tufted top
- Wood seat support with tapered legs



UTAH

- 1/4 circular bench
- Button tufted top
- Fully upholstered
- Wood frame with tapered legs



IRELAND

- Waiting bench
- Fully upholstered
- Tapered sides



JOURNEY

- Waiting bench
- Fully upholstered
- Wood frame and legs



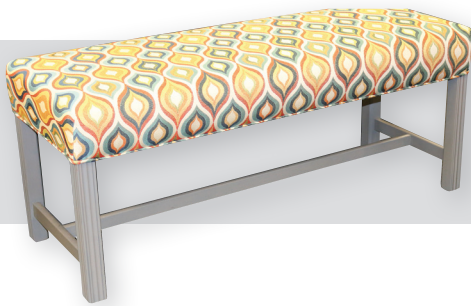
NEWTON

- Waiting bench
- Fully upholstered
- 2" Diameter steel legs



SOUTHWEST

- Waiting bench
- Wood seat support
- 2" Diameter steel legs



ELTON

- Bench
- Solid wood frame
- Fluted legs



CABIN

- Bench
- Solid wood frame



ROCKPORT

- Slatted bench
- Solid wood frame



PACIFIC

- Bench
- Distressed wood top
- Curved powder coated metal legs



CRYSTAL

- Bench
- Waterfall seat with decorative nail heads
- Square metal tube legs



COALTON

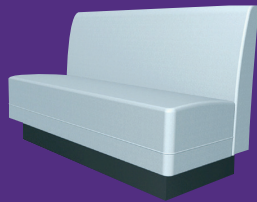
- Bench
- One piece wood seat support
- Padded seat

Booth Shapes

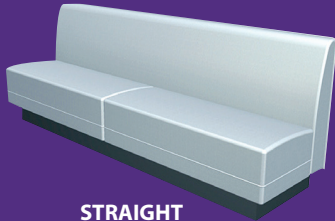
We offer every booth shape imaginable, from classic diner to futuristic round rotundas. So whether you envision a casual appearance or something really contemporary, we've got the look for you. As always, we'll create custom work as needed, so if you have a column running down the wall, we'll not only incorporate it, but we'll make it look like it's an important part of the decor. Your space is not a limitation to us.

Things to take note of in your space when deciding which booth shapes you want to use :

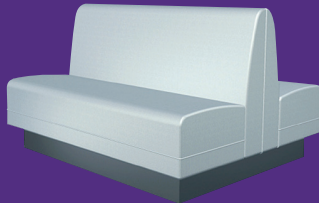
- Location of all windows and doors
- Tight corners or small spaces
- Angled or curved walls
- Columns
- Long lengths of wall
- Any accessibility issues



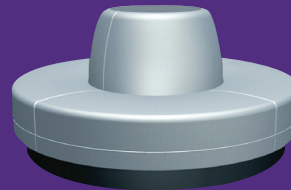
SINGLE



STRAIGHT



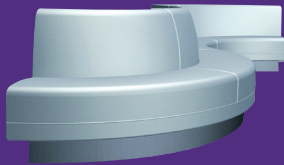
DOUBLE



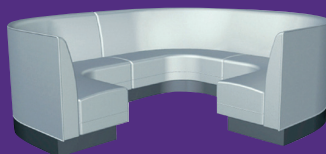
ROTUNDA



ELLIPSE



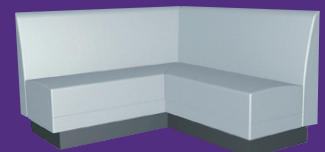
CUSTOM CURVE



3 QUARTER



U-SHAPE



L-SHAPE

Booth Heights

There are several different height options for tables, chairs, and booths. The height of furniture greatly affects the feel of your establishment. There are conditions to keep in mind when choosing the height of your furniture:

What atmosphere do you want to have (casual vs. formal)? Are there any regulations that you need to be aware of? Are there any architectural features of your space which may help determine the size of your furniture (lower ceiling, etc.)? Once you answer these questions, choosing the size of your furniture should be easy.



Standard Height:

This is typically a table height of 28" to 30" and a seat height of 18"-19". It is the most common height in restaurants. Not only do most people find this height very comfortable, it is also the only height that complies with ADA regulations.



Counter Height:

This is typically a table height of 34" to 36" and a seat height of 26". They are typically more casual and make it easier to talk with people who may be standing. They can work well in small areas because they give the illusion that they take up less space.



Bar Height:

This is typically a table height of 40" to 42" and a seat height of 30". This taller, thinner height is very good for small spaces and perfect for "bar area" tables. They have the same advantages as counter height furniture but even more so, because the difference between standing and sitting is so minimal, they create an extremely casual and "fun" atmosphere.



For additional information on our booths, banquettes, and interiors including: installation, quotes, warranty, and pricing give us a call. We'll be glad to help—877.747.7638.

A Final Word

We hope you've found this brochure informative, and that it's given you an insight on not just our products, but the way we conduct business as well. In this hustle-bustle change-a-minute world, it's reassuring to find a company that delivers what it promises, and does so with a personal touch that seems to be a lost art today.

When you call us, you talk to real people who are focused on meeting your restaurant and hospitality furniture needs. Whether you own one establishment or are the buyer for a large chain, you can expect nothing less than our full attention and, most importantly, our very best work. Oh, and the cherry on top is we'll do it at a price that you'll love. High quality, American-made beauty does not have to break the bank. Yes, you can have it all. Get in touch with us today and prepare to be pleasantly surprised.

Soft Touch Furniture

1560 South State Street
Girard, OH 44420 USA

softtouchfurniture.com

Phone: 877.747.7638 | 330.545.4204

Fax: 330.288.0083

Email: info@softtouchfurniture.com



Interested in other aspects of Soft Touch Furniture? See our other brochures



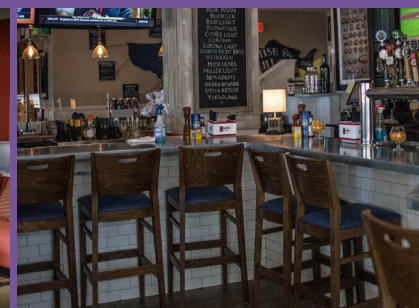
Table Tops & Bases



Millwork



Interiors



Chairs